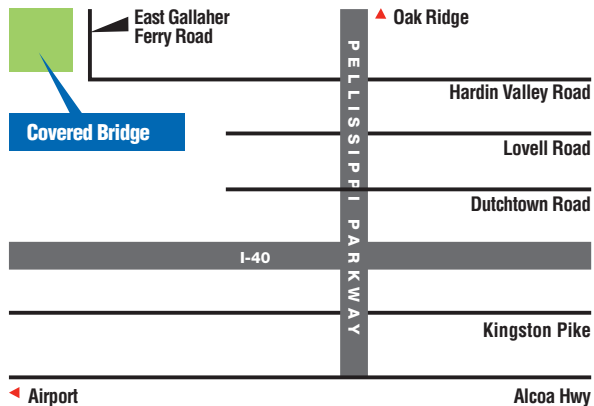


The Villas at Covered Bridge

Created in the spirit of the Covered Bridge casual and rustic setting, these magnificent, detached homes deliver maintenance-free living within a fantastic natural environment.



Chip Huber
865-389-8100
chip@chiphuber.com



ASSOCIATES

THE VILLAS AT COVERED BRIDGE



The Villas at Covered Bridge



● = Lots Sold



S P E C I F I C A T I O N H I G H L I G H T S

Construction Features

- Andersen® Wood Windows with Maintenance Free Exterior Cladding
- General Shale Oversized Queen Brick
- Hardi-Board® Siding & Soffits
- 30 Year Architectural Shingle Roof
- Security System Included
- High Efficiency Heat & Air Units
- Insulated Garage Doors
- Category 5 Structured Wiring for Cable, Telephone & Computer
- Covered Rear Porches
- Custom Designs from Jonathan Miller Architects

Interior Features

- 9'0" Ceiling Height on Main Level
- Hardwood Floors in Public Living Areas
- Tile Floors in all Baths & Laundry
- Upgraded Molding Package with Detail Throughout
- Granite Countertops in Kitchen
- Stone Fireplace
- Mahogany Front Door
- Insulated Carriage Style Garage Doors

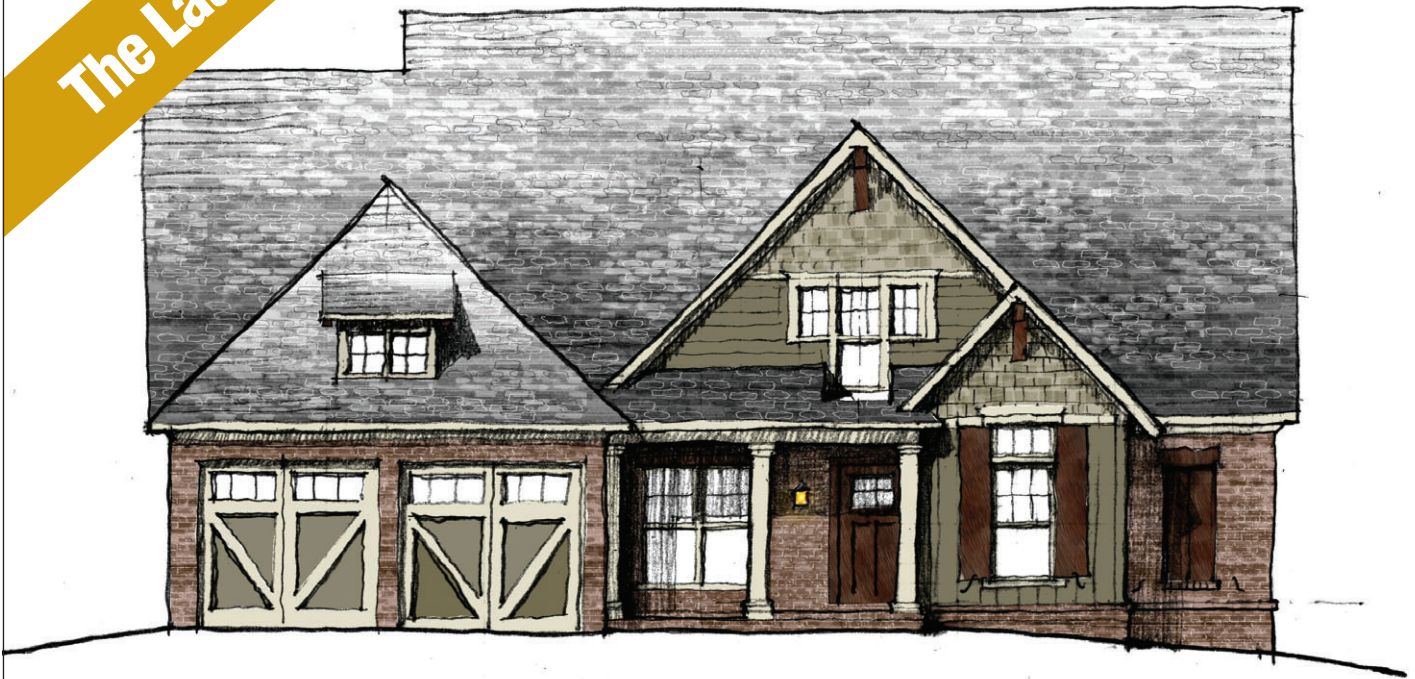
Chip Huber

865-389-8100

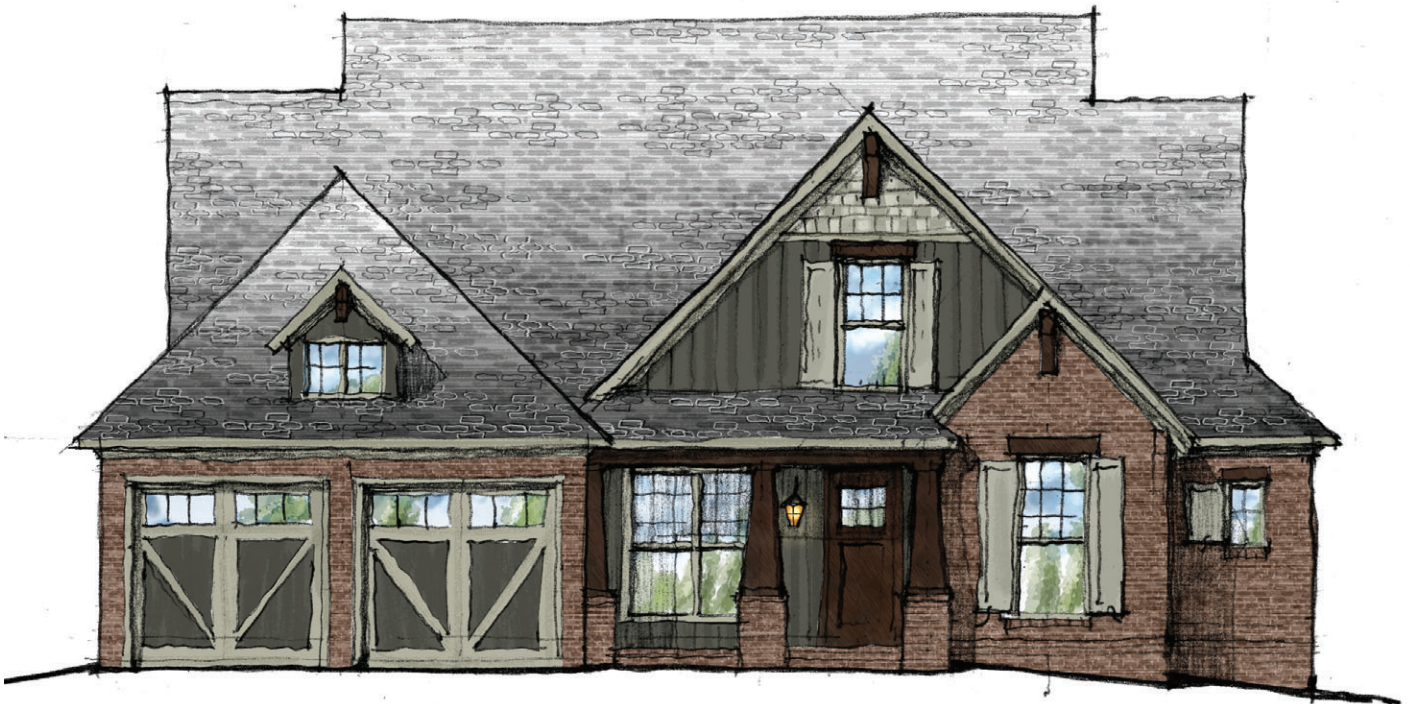
chip@chiphuber.com



ASSOCIATES

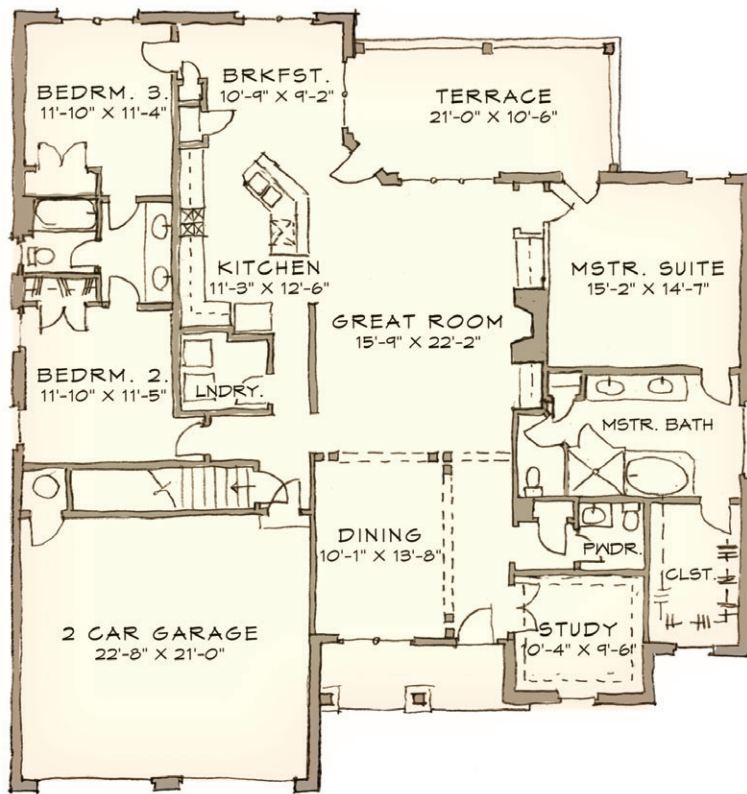


THE LAUREL: Front Elevation One



THE LAUREL: Front Elevation Two

THE LAUREL: Main Level



With dramatic, heavy timbers and detailed stonework, the new Villas at Covered Bridge feature a rustic craftsman look consistent with the atmosphere created within the neighborhood.

First Floor Plan

Main Level Finished	2,238 sf
Garage	476 sf
Porch	290 sf

Chip Huber

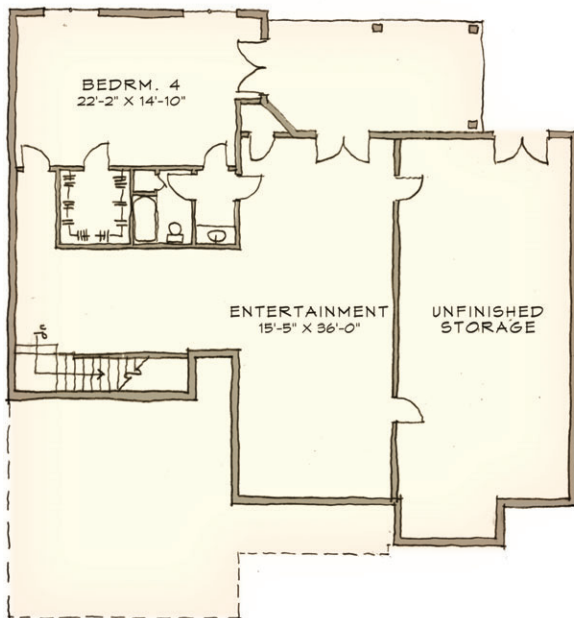
865-389-8100

chip@chiphuber.com



ASSOCIATES

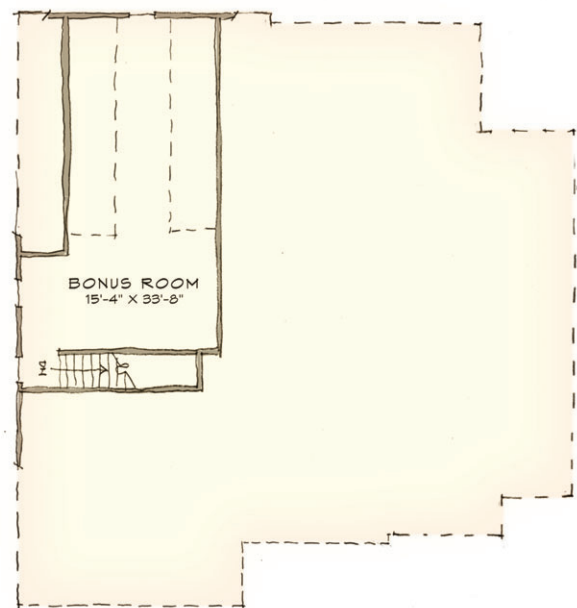
U P G R A D E O P T I O N S



Basement (option) either unfinished or finished as shown

Finished area 1,452 sf

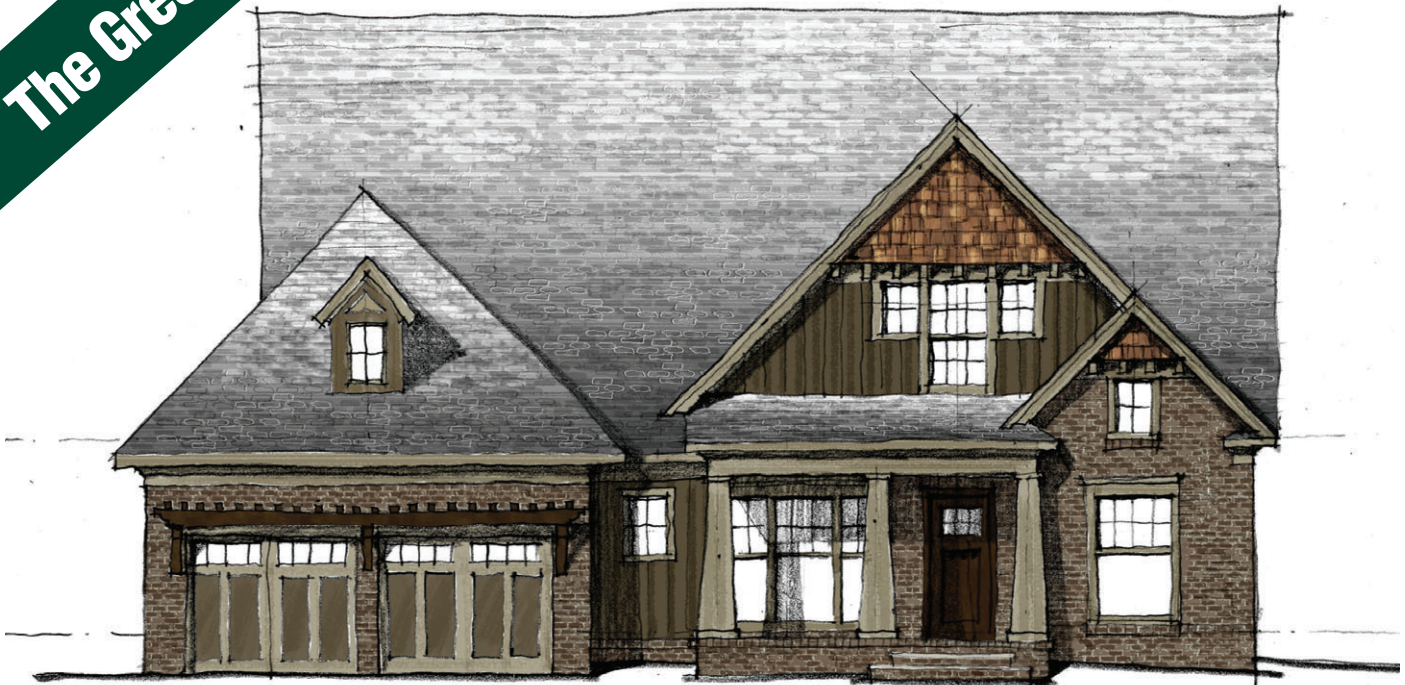
Unfinished area 780 sf



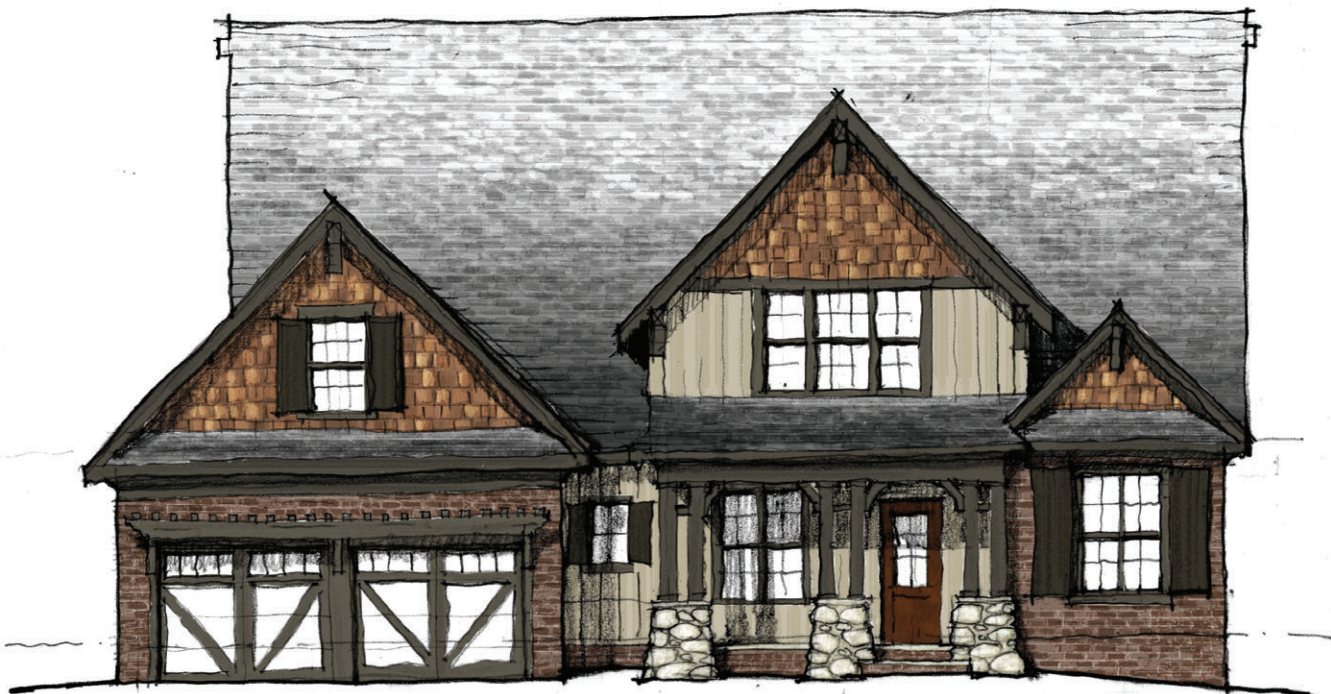
Bonus Room (option)

Size adding: 624 sf

offered finished or unfinished

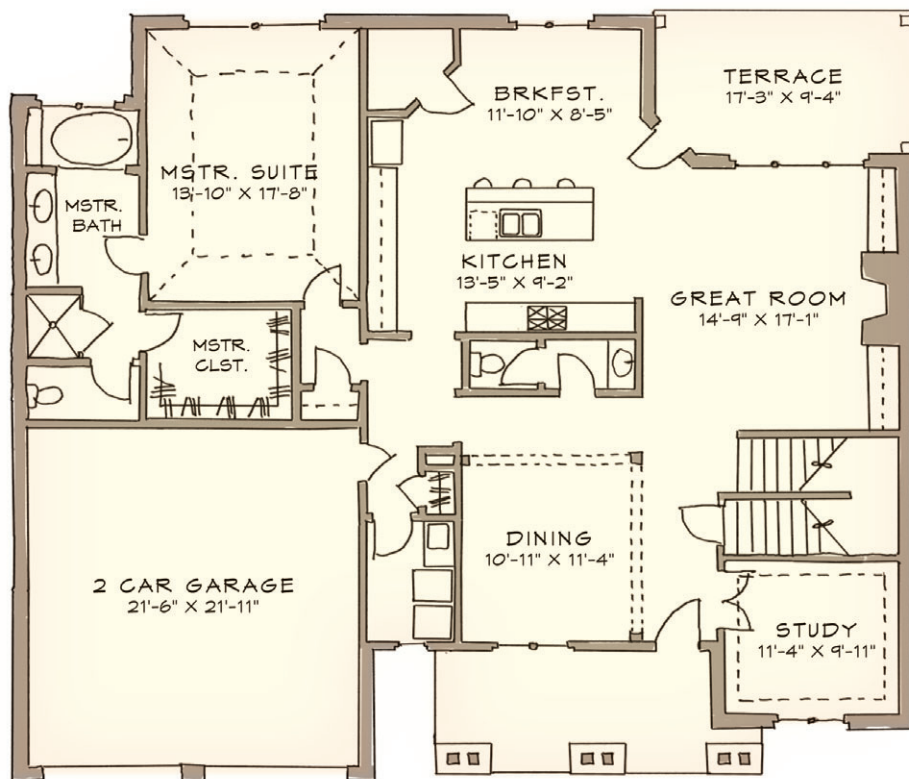


THE GREENBRIER: Front Elevation One
OR



THE GREENBRIER: Front Elevation Two

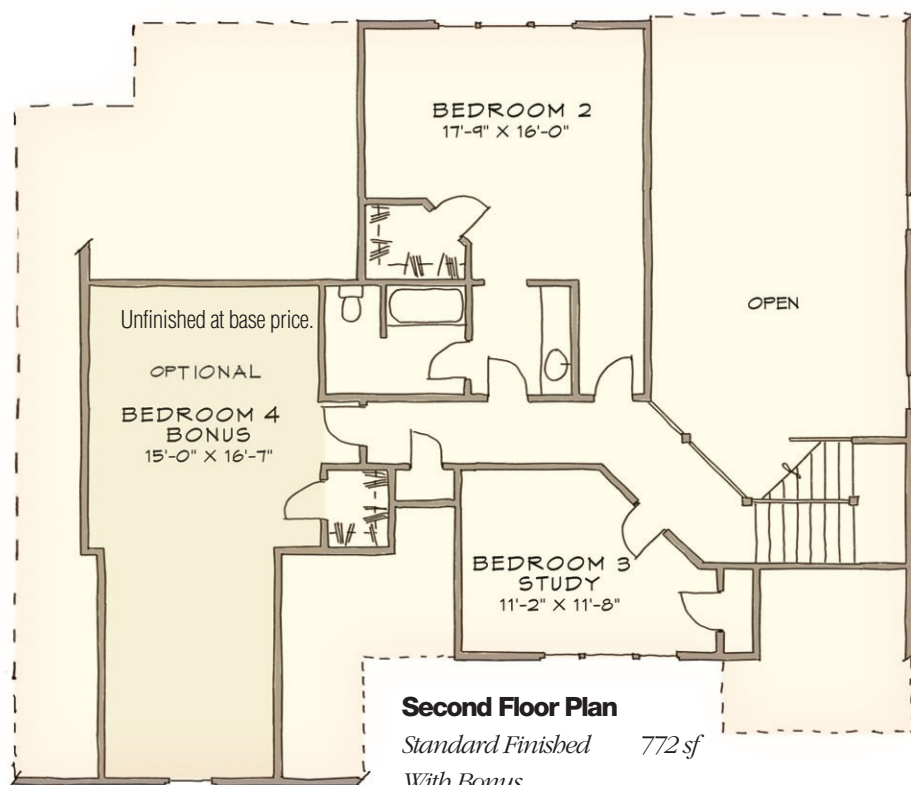
THE GREENBRIER: Main Level



Designed by nationally renowned architect Jonathan Miller, the 51 Villas are detached, maintenance-free homes that blend well with their natural setting. Many of the Villas back up to the neighborhood's green space, ensuring extra privacy.

First Floor Plan

Main Level Finished 1,856 sf



Second Floor Plan

Standard Finished 772 sf

With Bonus

Option Finished 465 sf additional

Chip Huber

865-389-8100

chip@chiphuber.com



ASSOCIATES

The Elkmont

www.hardinvalley.com



THE ELKMONT

The Main Level size is 1,660 SF while the Basement

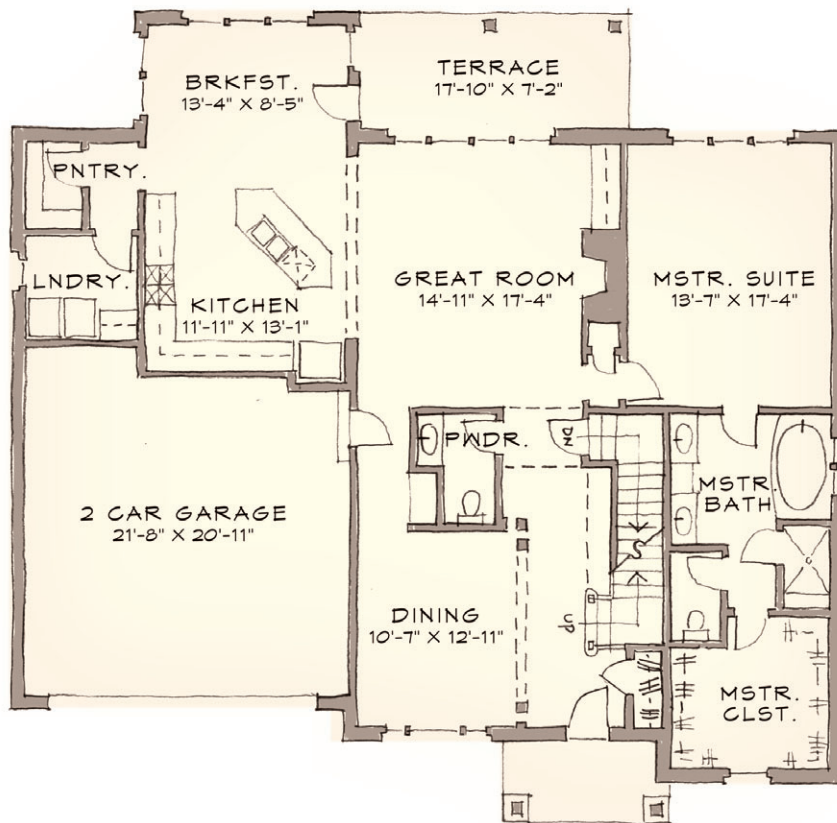
Finished Size is 1,373, Unfinished Storage Room is 93 SF.

Chip Huber
865-389-8100
chip@chiphuber.com



Chip Huber, Realty Executives Associates and Covered Bridge LLC use pictures, elevations, and floor plans for illustrative purposes only. Actual construction drawings (not included in this flyer) take precedent in guiding the construction of each home. Measurements and specifications are subject to change. Plans and elevations copyright © to Covered Bridge LLC.

THE ELKMONT: Main Level

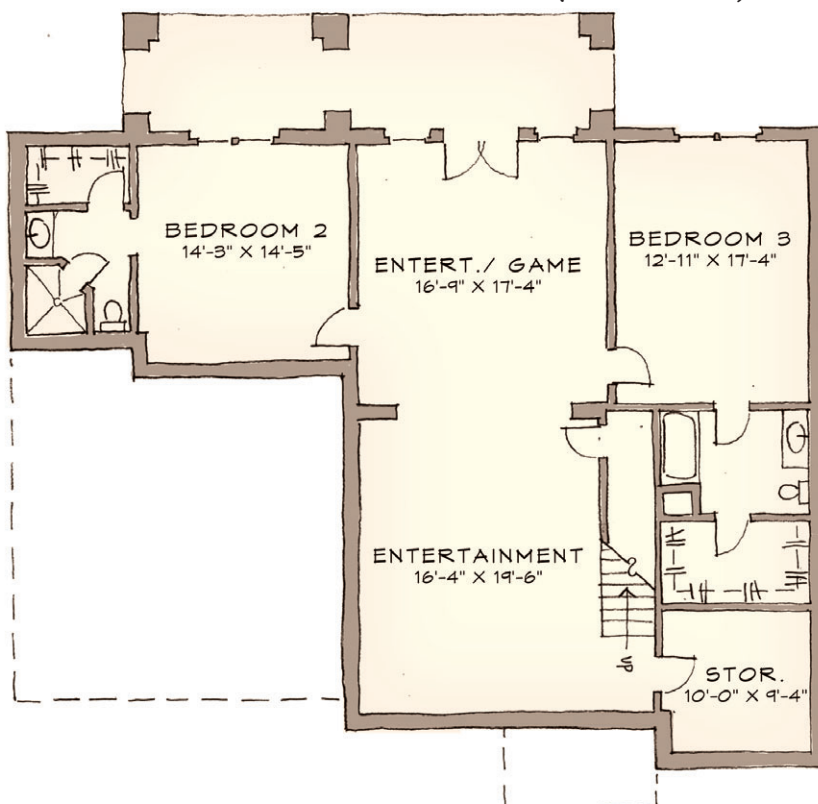


Designed by nationally renowned architect Jonathan Miller, the 51 Villas are detached, maintenance-free homes that blend well with their natural setting. Many of the Villas back up to the neighborhood's green space, ensuring extra privacy.

Chip Huber
865-389-8100
 chip@chiphuber.com



THE ELKMONT: Lower Level (basement)



Floor Plan

The Main Level size is 1,660 SF while the Basement Finished Size is 1,373, Unfinished Storage Room is 93 SF.



THE TREMONT

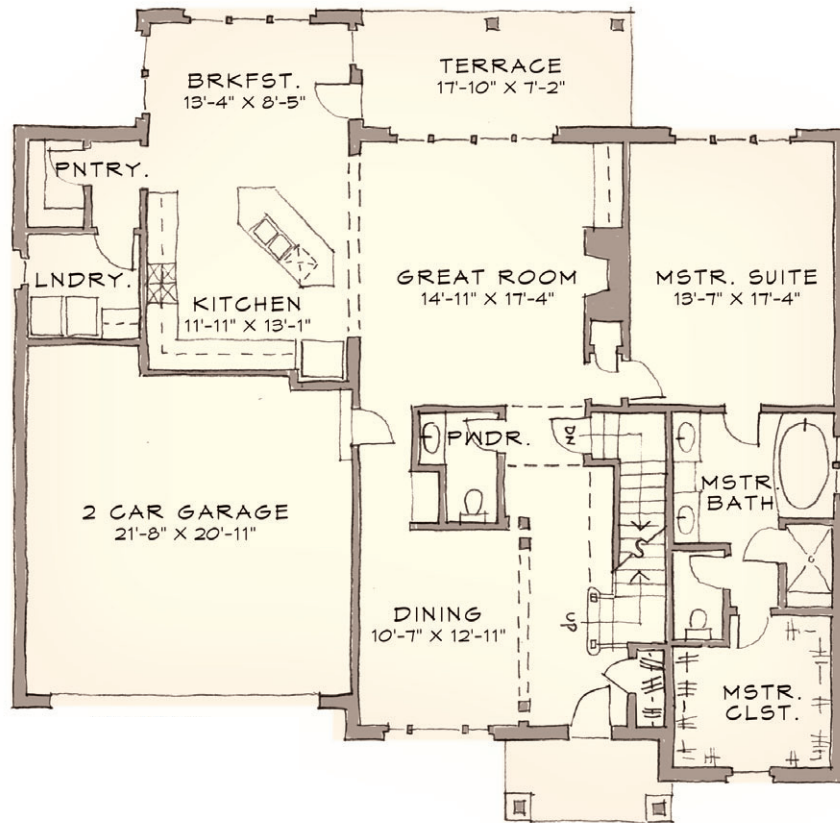
Main Level square footage is 1,660. Planned upper level finish (consisting of 2 bedrooms, 1 bath and hallway) is 770 SF leaving 687 SF unfinished and available for storage. Options include finishing the additional bedroom for an additional 244 SF and/or finishing the bonus room which adds an additional 443 SF.

Chip Huber
865-389-8100
chip@chiphuber.com



ASSOCIATES

THE TREMONT: Main Level

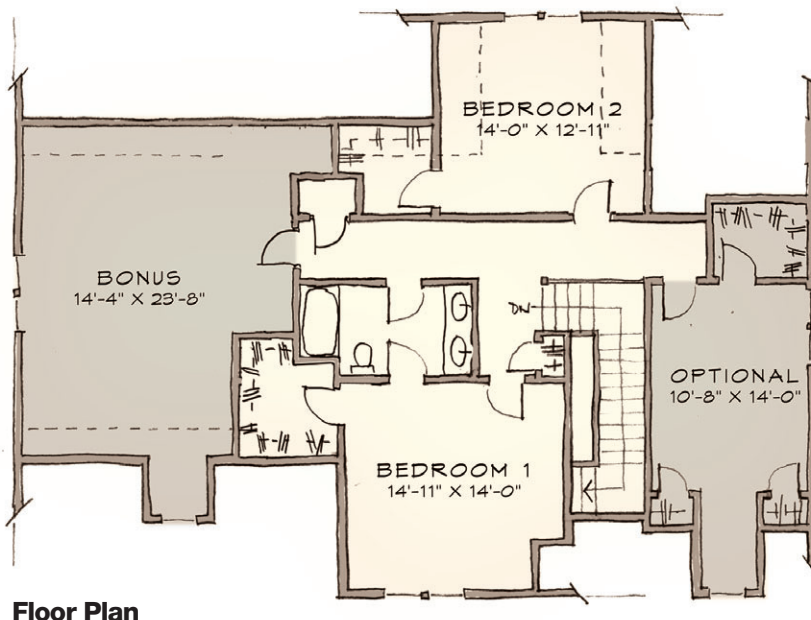


Chip Huber
865-389-8100
chip@chiphuber.com



ASSOCIATES

THE TREMONT: Upper Level



Floor Plan

Main Level square footage is 1,660. Planned upper level finish (consisting of 2 bedrooms, 1 bath and hallway) is 770 SF leaving 687 SF unfinished and available for storage. Options include finishing the additional bedroom for an additional 244 SF and/or finishing the bonus room which adds an additional 443 SF.